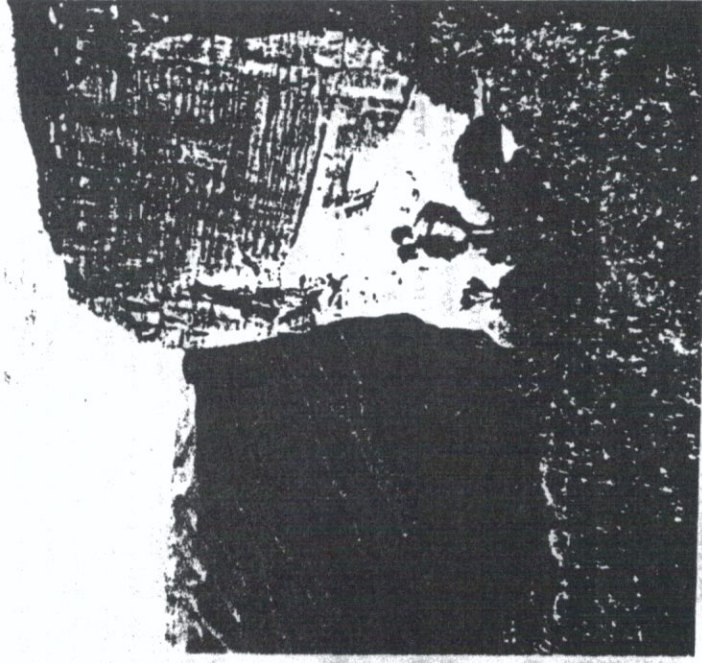
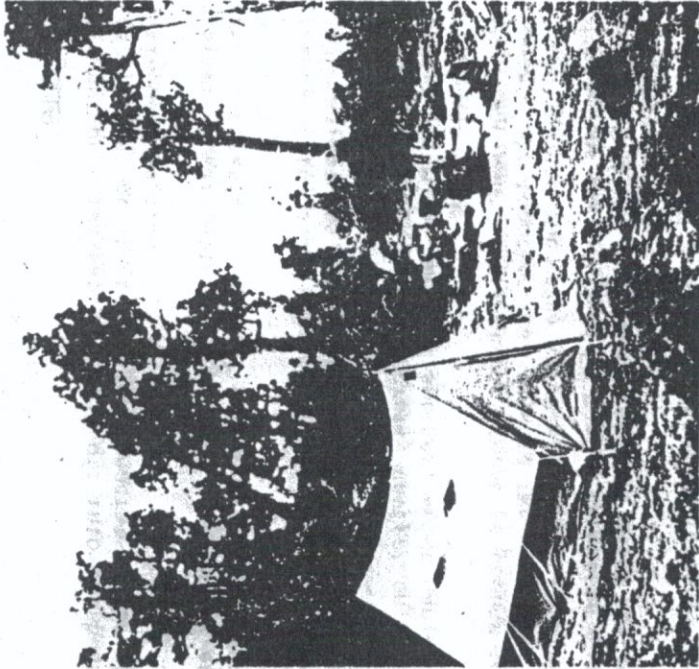


# BUSHWALK . .



For more details about bushwalking clubs, contact

## FEDERATION OF

## BUSHWALKING CLUBS (N.S.W.)

G.P.O. Box 2090, C/- Environment Centre,  
SYDNEY. N.S.W. 2001. or 399 Pitt Street,  
SYDNEY. N.S.W.  
Ph: (02) 267-7722.

— WITH A CLUB